

PRODUCT INFORMATION PACKET

Model No: 184TTDW16315
Catalog No: E937B
7.5,3600,DP,184T,3/60/200
Open Drip Proof (ODP)



Regal and Marathon are trademarks of Regal Beloit Corporation or one of its affiliated companies.

©2018 Regal Beloit Corporation, All Rights Reserved. MC017097E





Nameplate Specifications

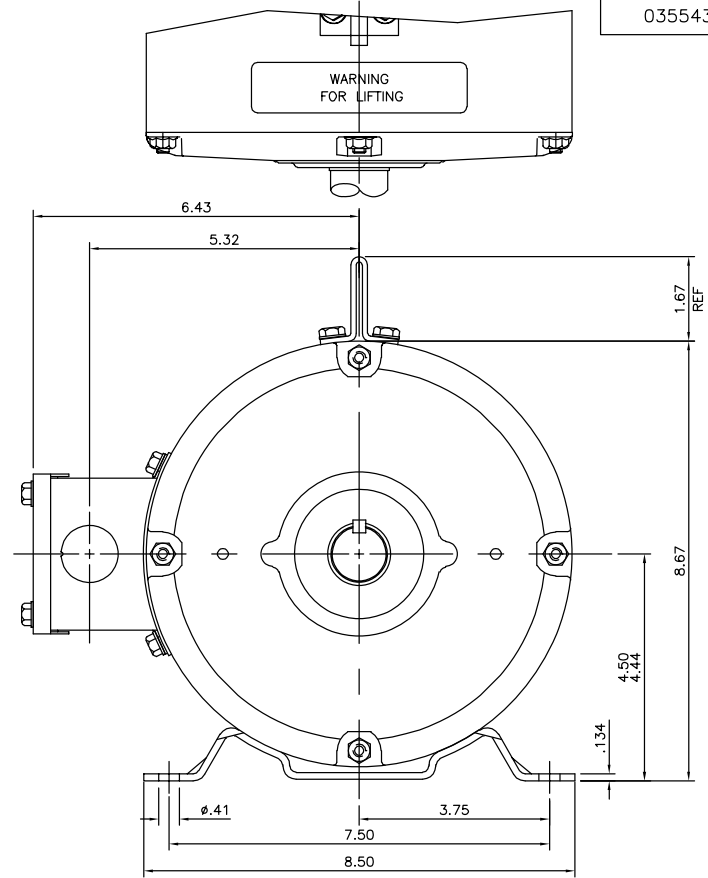
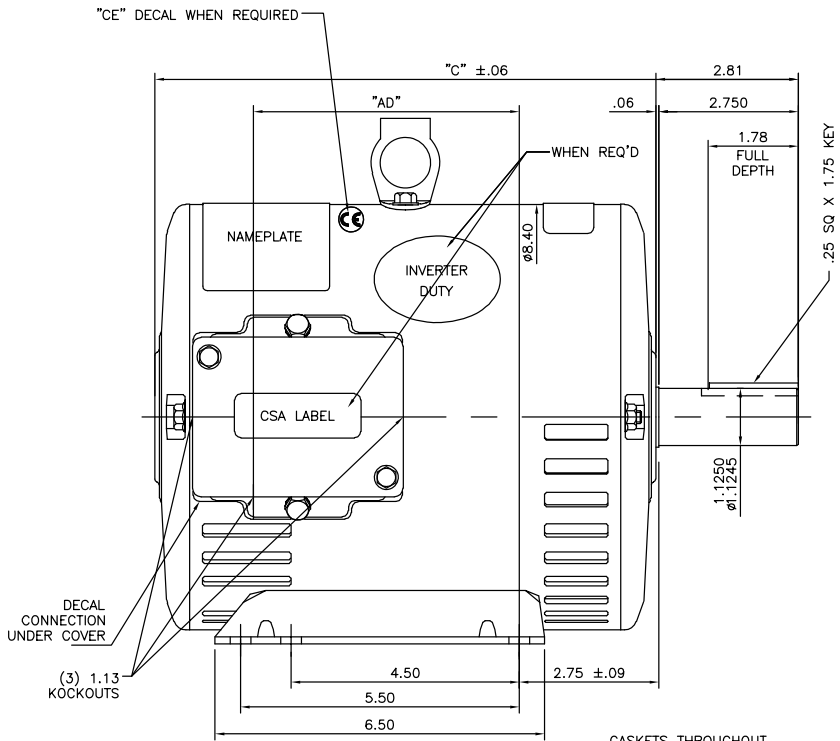
Output HP	7.50 Hp	Output KW	5.6 kW
Frequency	60 Hz	Voltage	200 V
Current	20.5 A	Speed	3490 rpm
Service Factor	1.15	Phase	3
Efficiency	88.5 %	Duty	Continous
Insulation Class	F	Design Code	A
KVA Code	J	Frame	184T
Enclosure	Drip Proof	Overload Protector	No
Ambient Temperature	40 °C	Drive End Bearing Size	6206
Opp Drive End Bearing Size	6205	UL	Recognized
CSA	Y	CE	Y
IP Code	12		

Technical Specifications

Electrical Type	Squirrel Cage Induction Run	Starting Method	Across The Line
Poles	2	Rotation	Reversible
Mounting	Rigid base	Motor Orientation	Horizontal
Drive End Bearing	Ball	Opp Drive End Bearing	Ball
Frame Material	Rolled Steel	Shaft Type	T
Overall Length	15.19 in	Shaft Diameter	1.125 in
Shaft Extension	2.75 in	Assembly/Box Mounting	F1/F2 Capable
Outline Drawing	035543-1100	Connection Diagram	005102.01

This is an uncontrolled document once printed or downloaded and is subject to change without notice. Date Created: 06/29/2018

035543



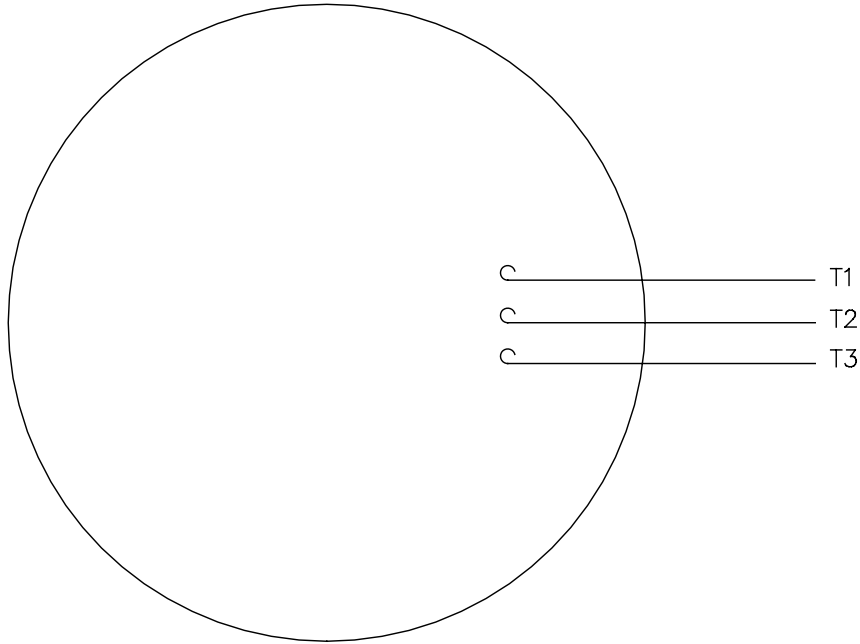
GASKETS THROUGHOUT

DASH NO.	"C"	"AD"
850	12.69	5.25
900	13.19	5.75
950	13.69	6.25
1000	14.19	6.75
1050	14.69	7.25
1100	15.19	7.75
1150	15.69	8.25
1200	16.19	8.75

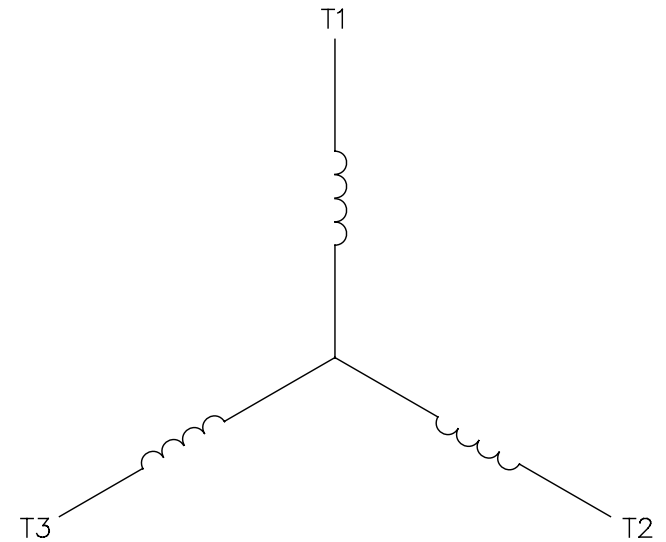
		TOLERANCES UNLESS SPECIFIED			DRAWN	YS 03/14/08
DEC.	INCHES	X	±.1		CHK	YS 08/08/07
	.XX	±.03		TITLE	OUTLINE - 180T FRAME	
	.XXX	±.005			DRIP PROOF - RIGID	
01	WHEN REQ'D NOTE ADDED	PVR 06/16/15	GR .XXXX ±.0005	MAT'L	SCALE	1=2
NO.	REVISION	BY & DATE	CHK ANG ±1/2'	FINISH	REF	035534
THIS DRAWING IN DESIGN AND DETAIL IS OUR PROPERTY AND MUST NOT BE USED EXCEPT IN CONNECTION WITH OUR WORK ALL RIGHTS OF DESIGN AND INVENTION ARE RESERVED THIS IS AN ELECTRONICALLY GENERATED DOCUMENT - DO NOT SCALE THIS PRINT				RFP	CAD FILE	035543
				SIZE	DRAWING NO.	REV.
				B	035543	01

005102-01

VIEW FROM OUTSIDE OF MOTOR AT SWITCH END.



LINE LEADS



CONNECT LEADS AS FOLLOWS
FOR FOUR CONDUCTOR CORD ()

CORD	L1 (RED)	L2 (WHITE)	L3 (BLACK)	(GREEN)
MOTOR	T1	T2	T3	GROUND

				TOLERANCES UNLESS SPECIFIED		Regal Beloit America, Inc.			DRAWN JRW 9/11/75		
				DEC.	INCHES				CHK		
				.X	±.1	APPD JCW 9/11/75					
08	UPDATED TO REGAL LOGO	SAJ 06/26/15	AJY	.XX	±.01	TITLE EXTERNAL WIRING DIAGRAM TYPE "T" W/O PROTECTOR			SCALE 1=1		
07	UPDATED TO CURRENT STANDARDS	DBT 5/30/97		.XXX	±.005				REF W-T6343-6		
06	REDRAWN ON CAD; ADDED DECAL NUMBER	SAW 1/24/95		.XXXX	±.0005				MAT'L. DECAL - 004169		FMF 6T17FB7
NO.	REVISION	BY & DATE	CHK	ANG	±1/2"	FINISH			PREV		
THIS DRAWING IN DESIGN AND DETAIL IS OUR PROPERTY AND MUST NOT BE USED EXCEPT IN CONNECTION WITH OUR WORK ALL RIGHTS OF DESIGN AND INVENTION ARE RESERVED THIS IS AN ELECTRONICALLY GENERATED DOCUMENT - DO NOT SCALE THIS PRINT				RFP 5/1/02		CAD FILE 00510201		SIZE	DRAWING NO.		REV.
				DIST BRF-NLV				A	005102-01		08

Data Sheet

Date: 19-06-2017
 Customer: _____
 Attention: _____
 Submitted by: FAREEDA DUDEKULA



184TTDW16315

Submittal

Data @ 200 V

Motor Load Data

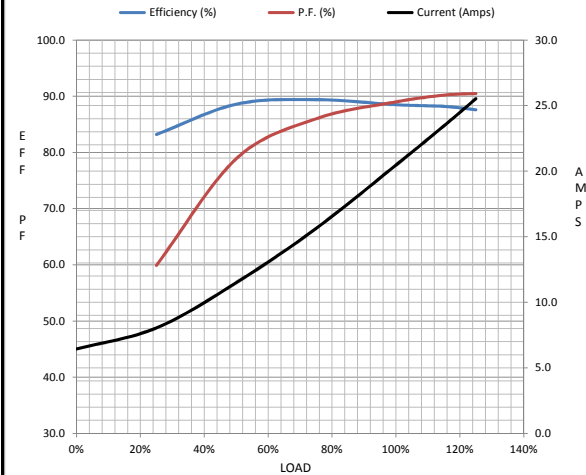
Load	0%	25%	50%	75%	100%	115%	125%	LR
Current (Amps)	6.4	8.1	11.5	15.6	20.5	23.5	25.5	173
Torque (ft-lb)	0.00	2.80	5.6	8.4	11.3	13.1	14.3	28.5
RPM	3600	3573	3548	3520	3490	3470	3456	0
Efficiency (%)		83.2	88.6	89.4	88.5	88.2	87.6	
P.F. (%)	11.0	59.9	78.9	86.0	89.0	90.2	90.5	47.5

Motor Speed Data

	LR	Pull-Up	BD	Rated	Idle
Speed (RPM)	0	700	2630	3490	3600
Current (Amps)	173	155	115	20.5	6.4
Torque (ft-lb)	28.5	27.0	39.0	11.3	0.00

Information Block

HP	7.5			
Sync. RPM	3600			
Frame	180			
Enclosure	DP			
Construction	TDW			
Voltage	200 V			
Frequency	60 Hz			
Design	A			
LR Code letter	J			
Service Factor	1.15			
Temp Rise @ FL	45 ° C			
Duty	CONT			
Ambient	40 ° C			
Elevation	1,000 feet			
Rotor/Shaft wk ²	0.30 Lb-Ft ²			
Ref Wdg	T82109 R1			
Sound Pressure @ 1M	71 dBA			
VFD Rating	NONE			
Outline Dwg	035543			
Conn. Diag	005102.01			
Additional Specifications:				
0				
365THFS8036				
EQUIV CKT (OHMS / PHASE)				
R1	R2	X1	X2	Xm
0.2140	0.1740	0.3840	0.2420	14.9630



Speed -Torque Curve

